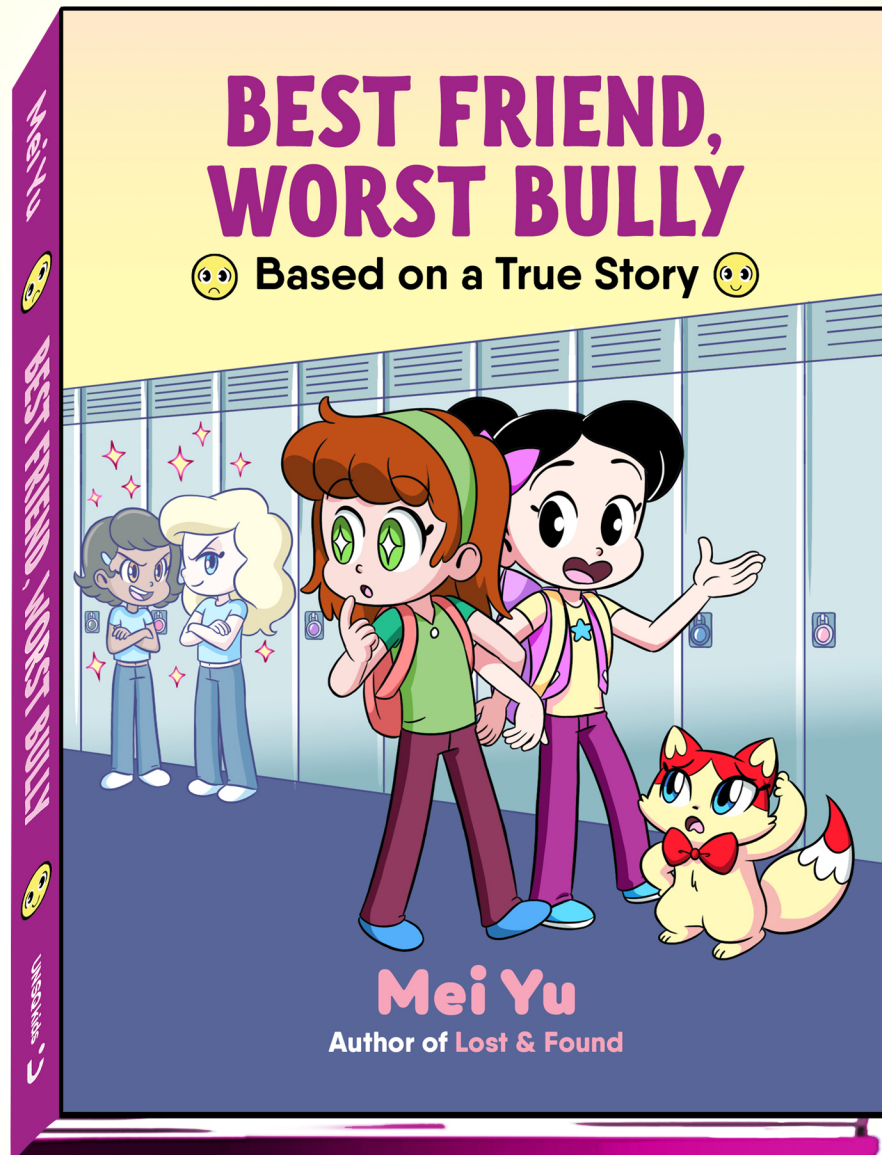


EDUCATOR GUIDE

Guide written by Mei Yu



**Includes Discussion Questions
and Classroom Activities**

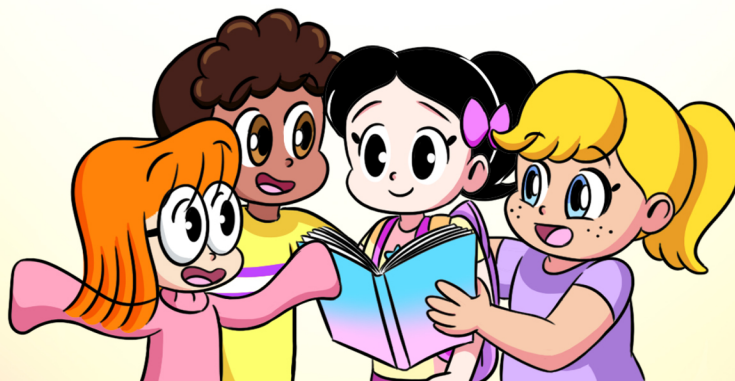
Hardcover: 978-1454959939 \$24.99/\$32.99 CAN 144 pages
Paperback: 978-1454959946 \$12.99/\$16.99 CAN 144 pages



Discussion Questions



1. Have you ever had a friend who wanted to stop being friends with you? How did that make you feel?
2. If you were being bullied, or saw someone who was being bullied, what would you do?
3. What are some activities you like doing with your friends? How do these things make you feel?
4. If someone made fun of your friends in front of you, what would you do? Why?
5. Why does Sophie start bullying Mei?
6. On page 26, Sophie discards her half of her friendship necklace with Mei. Why do you think she does this?
7. What are some ways Mei is affected from getting bullied?
8. Why do you think it takes so long for Mei to realize Sophie is being a bully?
9. What are some ways Mei tries dealing with her bullies? How effective were these ways?
10. What do you think Mei's dream starting on page 109 is about?
11. Could Mei have handled her bullies in a better way, or stopped them sooner? How?
12. What have you learned from Mei's experience in *Best Friend, Worst Bully*?



Classroom Activities

1. One of Mei's favorite things to do is drawing. Have students draw their favorite things to do and share it with the class.
2. Ask students if they had to draw a birthday gift for a friend, what would it look like? Have them draw it out. Then, share them with the class.
3. Throughout *Best Friend, Worst Bully*, Mei has various Meters, like the Happy Meter or Embarrassment Meter, to show her emotions. Have students design their own Meters for their emotions like happiness, embarrassment, and so on. What situations would cause these Meters to go up or down? Have students draw out these situations, and how those situations would make them feel. Then, share these with the class.
4. Throughout *Best Friend, Worst Bully*, the book uses certain expressions to show characters' emotions. Discuss how certain expressions are exaggerated to emphasize certain emotions. What are some other ways to exaggerate certain emotions? Have students draw these, then share with the class.
5. Ask students to imagine if they had to do an art project about friends. Have students draw what they think represents friendship. Then, have them share their drawings with the class.



About the Author



Mei Yu is an award-winning, internationally-published author and artist from Vancouver, British Columbia. Mei has over 2 million followers, 1,000 videos, and 500 million views across YouTube, Facebook, and Instagram.

Many fans have told Mei that her art and videos were their childhood, and that she helped them get started in art. Now, many have become professional artists.

Mei's first graphic novel memoir, *Lost & Found: Based on a True Story*, won the Forest of Reading's Silver Birch Express Award 2025. This is an award solely determined by student readers' votes from schools and libraries across Canada. It is also nominated for the 2027 Bluestem Award, Illinois' Grades 3-5 Readers' Choice Awards, nominated for the American Library Association's 2024 Best Graphic Novels for Children Reading List, and selected as one of the Chicago Public Library's Best of the Best Books 2024, among other reading lists and award nominations.

Mei is also the author and illustrator of *Draw with Mei: How to Draw Anime Characters: With Quick and Easy Templates*. This book, along with *Lost & Found* and *Best Friend, Worst Bully*, is published by Union Square Kids, a part of Hachette Book Group.

Mei's most comprehensive how to draw manga book, *Manga Drawing School*, was published by DK, a part of Penguin Random House. It has been released in multiple languages worldwide including Spanish, French, German, Italian, and Ukrainian. The second book in this series, *Kawaii Drawing School*, will release Summer 2026.

Learn more at MeiYuArt.com